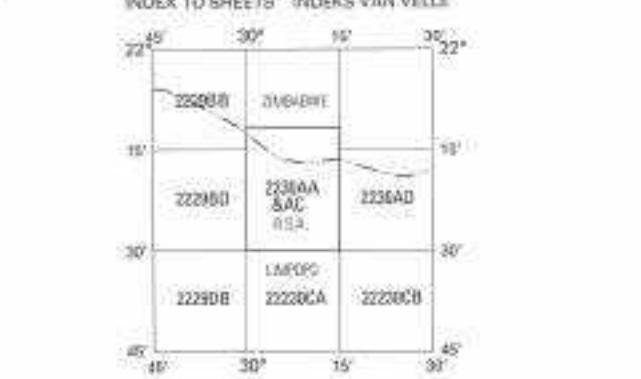


Published by the Chief Directorate: Surveys and Mapping, Private Bag X16, Midrand
 Gepubliseer deur die Hoofdireksie: Opmetting en Kaarte, Private Bag X16, Midrand
 © State Copyright 2003. State-owned work
 This map may not be reproduced by any means, including digital, without prior permission.
 Hierdie kaart mag nie deur enige metode herproduseer word, insluitend digitaal, sonder vooraf verkreepte toestemming nie.

Printed by the Chief Directorate: Surveys and Mapping
 Getruk deur die Hoofdireksie: Opmetting en Kaarte

REFERENCE	VERKLARING
National Freeway, National Road	Nasionale Oewerpad, Nasionale Road
Aerial Route	Hoofverkeerslyn
Main Road	Hoofpad
Secondary Road, Branch Road	Byweginne Pad, Takpad
Other Road, Bridge	Ander Pad, Brug
Track and Riding Trail	Dorweg Pad en Voetspoed
Railway, Station or siding	Spoorweg, Stasie of Sylyn
Other Railway, Tunnel	Ander Spoorweg, Tunnel
Enrichment, Gravel	Opvoeding, Gravel
Power Line	Kraglyn
Build-up Area (High, Low Density)	Bevolkte Gebied (Hoë, Laë Digtheid)
Buildings, Run	Geboue, Run
Post Office, Police Station, State	Postkantoor, Polisie-stasie, Staat
Place of Worship, School, Hotel	Plak van Aandrigting, Skool, Hotel
Fossil, WSP	Erdfinding, WSP
Wingspan Monument	Wingspan Monument
Communication Tower	Kommunikasietoring
Mine Dump, Excavation	Myndoop, Uitgraving
Trigonometrical Station, Marrow Beacon	Palkepos, Seewaarskerm
Lighthouse and Marine Light	Waaierlig en Seewaarskerm
Cemetery, Grave	Begraafplaas, Graf

CONTOUR INTERVALS IN METRES / VERHOORINGSINTERVALE IN METERS
 Heights are in metres above mean sea level
 Hoëtes is in meters bo gemiddelde seevlak
 Gauss Spheroid Projection, Central Meridian 29° East
 Hoofmeridiaan is 29° Oos
 WGS84 Ellipsoid
 Mean magnetic declination 12°31' West of True North, July 2002
 Mean annual change 7' Westwards 2002-2005
 Supplied by Hartmann Magnetic Observatory
 Gemiddelde magnetiese deklinasie 12°31' Wes van Waar Noord, Julie 2002
 Gemiddelde jaarlike verandering 7' Westwaarts 2002-2005
 Voorsien deur die Hartmann Magnetiese Observatorium



REFERENCE	VERKLARING
International Boundary and Beacon	Internasionale Grens en Baken
Provincial Boundary	Provinsiale Grens
Protected Area	Bewaringsgebied
Perennial Water	Staanhoudende Water
Intermittent Water	Nie-staanhoudende Water
Non-perennial River	Nie-staanhoudende Rivier
Non-Perennial Water	Nie-staanhoudende Water
Dry Water Source	Droë Loop
Dry Pan	Droë Pan
Marsh and Vlei	Moeras en Vlei
Pipeline (above ground)	Pyplyn bo die grond
Water Tower, Reservoir, Water Poff	Wateroring, Reservoir, Waterpomp
Coastal Rocks	Kusroëls
Prominent Rock Outcrop	Prominente Klipboord
Erosion Sand	Erdsand
Woodland	Bosveld
Cultivated Land	Bewerkte Land
Orchard or Vineyard	Bosveld of Wingerd
Recreation Ground	Recreasiegebied
Rise of Tides	Ry van Tye

Colours and patterns supplied by the Surveyor-General
 Kleure en patrone verskaf deur die Opmettings-Generaal

Published by the Chief Directorate: Surveys and Mapping
 Gepubliseer deur die Hoofdireksie: Opmetting en Kaarte

The delineation of international and provincial boundaries on this map should not be considered as authoritative.
 Die afbakening van internasionale en provinsiale grense op hierdie kaart moet nie as gesaghebbend beskou word nie.



2230 AC 11 MUSINA (SOUTH)

ORTHOPHOTO MAP SERIES 1 : 10 000 SOUTH AFRICA
 ORTOFOTO KAARTREEKS 1 : 10 000 SUID-AFRIKA



Gauss Conform Projection, Central Meridian 31° East
 Contour Interval 5 Metres
 Grid Interval 1 000 Metres
 Hartbeesthoek 94 Datum
 WGS84 Ellipsoid

1 : 10 000

Gauss Konforme Projeksie, Middellmeridiaan 31° Oos
 Kontourtussenruimte 5 Meter
 Ruittussenruimte 1 000 Meter
 Hartbeesthoek 94 Datum
 WGS84 Ellipsoid

2230 AC 11 SECOND EDITION
 TWEEDE UITGAWE
 2004

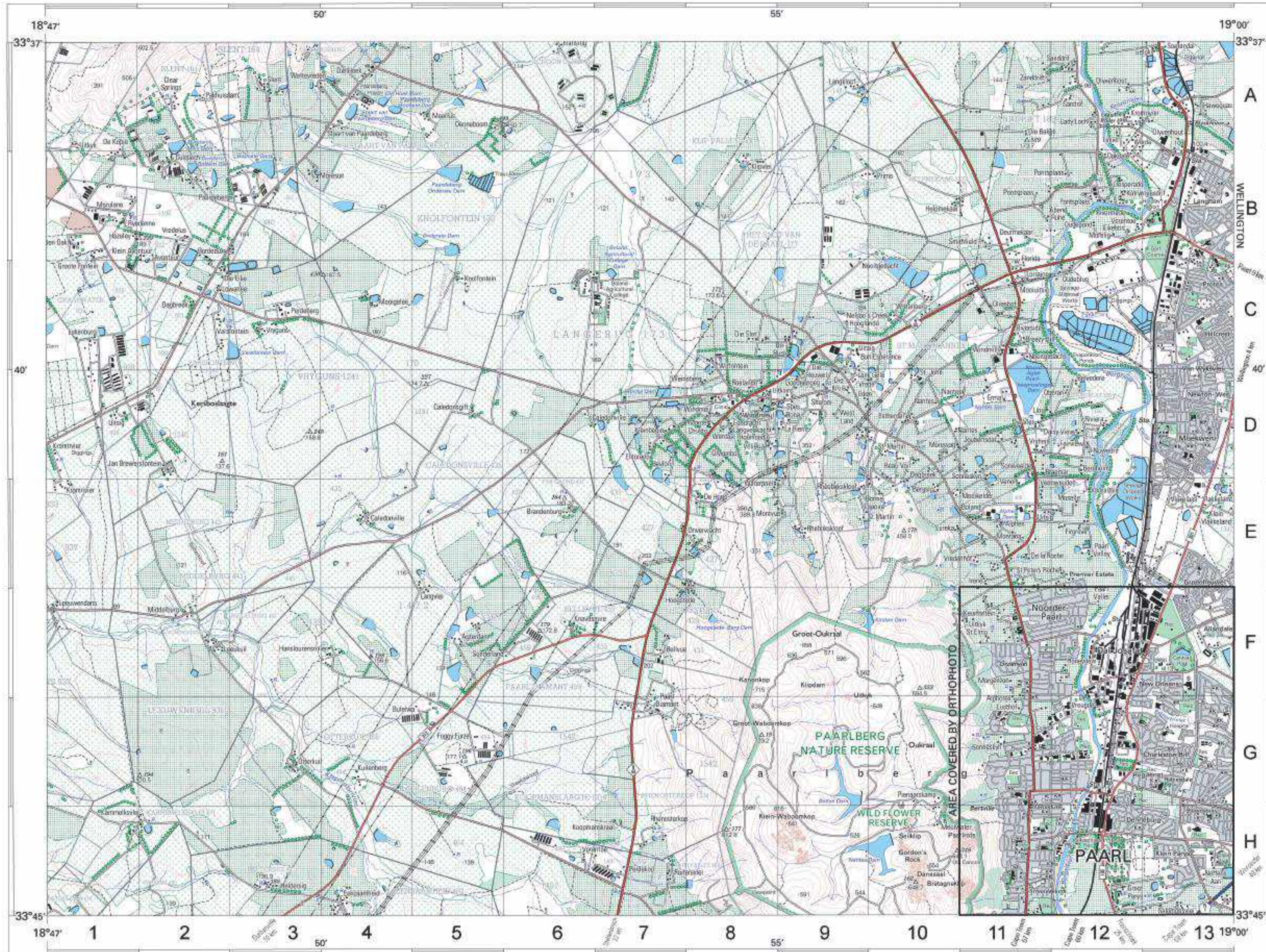
INDEX TO SHEETS INDEX VAN VELLE

2229BD10	2230AC9	2230AC7
2229BD15	2230AC11	2230AC13
2229BD20	2230AC16	2230AC17

30° 00'

3318DB PAARL

1:50 000 SOUTH AFRICA
SUID-AFRIKA



Published by the Chief Directorate: Surveys and Mapping, Private Bag X10, Mowbray
 Capitaël deur die Hoofdietsel: Opvoeding en Kartering, Private Bag X10, Mowbray
 © State Copyright 2003. Staatsreëls
 This map may not be reproduced by any means, including digital, without prior permission.
 Hierdie kaart mag nie deur enige metode herproduseer word, insluitend digitaal, sonder vooraf getrekte goedkeuring nie.

Printed by the Government Printer, Private Bag 205, Pretoria
 Gedruk deur die Staatsdrukker, Private Bag 205, Pretoria

REFERENCE	VERKLARING
National Freeway, National Route	Nasionale Oewerpad, Nasionale Route
Arterial Road	Hoofverkeersroete
Main Road	Hoofpad
Secondary Road, Bench Mark	Sekondêre Pad, Hoogtemerk
Other Road, Bridge	Andere Pad, Brug
Track and Riding Trail	Donkerveld Pad en Voetspoorpad
Railway, Station or siding	Spoorweg, Stasie of Syden
Other Railway, Tunnel	Andere Spoorweg, Toring
Embankment, Cutting	Opvoeding, Deurgang
Power Line	Kraglyn
Build-up Area, High, Low Density	Beboerde Gebied, Hoë, Laë Densiteit
Building, Ruin	Gebou, Muras
Post Office, Police Station, Shop	Poskantoor, Polisestasie, Winkel
Place of Worship, School, Hall	Plaas van Aanbeding, Skool, Saal
Fence, Wall	Omheining, Muur
Windmill, Monument	Windpomp, Monument
Communication Tower	Kommunikasietoring
Mine Dump, Excavation	Mynafval, Opgroewing
Trigonometrical Station, Marine Beacon	Polhoek, Seevaarmerk
Lighthouse and Marine Light	Vuurtoer en Seevaarlig
Cemetery, Grave	Begraafplaas, Graf

Mean magnetic declination 23°33' West of True (until July 2002).
 Mean annual change 0' Westwards (2000-2005).
 Supported by Hermanus Magnetic Observatory.
 Gemiddelde magnetiese deklinasie 23°33' Wes van Ware Noord, Julie 2002.
 Gemiddelde jaarlikse verandering 0' Westwaarts (2000-2005).
 Voorteen deur die Hermanus Magnetiese Observatorium.

Heights are in metres above mean sea level
 Hoogtes is in meter bo gemiddelde seevlak

The grid lines of the South African Co-ordinate System are indicated in the margin by short black ticks at 10 000 metre intervals, with co-ordinate values in units of 10 000 metres in blue.
 Die roettes van die Suid-Afrikaanse Koordinatstelsel word in die kante van hierdie kaart aangedui deur kort swart strepe 10 000 meter van mekaar, met koördinaatwaardes in blou van 10 000 meter in blou.

INDEX TO SHEETS	INDEKS VAN VELLE	
3318DC	3318DB	3318AC
3318DA	3318DB	3318CA
3318DC	3318DD	3318CC

Whilst every effort is made to ensure the accuracy of this map, users noting errors and omissions are requested to notify the Chief Directorate: Surveys and Mapping.

Alhoewel pogings moedig word aangewend om die akkuraatheid van hierdie kaart te verseker, word gebruikers versoek om die Hoofdietsel: Opvoeding en Kartering, te kennis te gee van enige foute of ontbrekende.

REFERENCE	VERKLARING
International Boundary and Beacon	Internasionale Grens en Baken
Provincial Boundary	Provinsiale Grens
Protected Area	Bewagingsgebied
Perennial River	Staanhouende Water
Non-perennial River	Nie-staanhouende Water
Inter-perennial River	Nie-staanhouende Water
Dry Water Course	Droë Loop
Dry Pan	Droë Pan
Mound and Vlei	Moens en Vlei
Pipeline (above ground)	Pyplyn (bo die grond)
Water Tower, Reservoir, Water Point	Wateroring, Reservoir, Waterpunt
Coastal Rocks	Kaaslymmer
Prominent Rock Outcrop	Opvallende Rook
Embankment	Opvoeding
Woodland	Beboerde Gebied
Cultivated Land	Bewerkte Land
Orchard or Vineyard	Bos of Wynland
Recreation Ground	Ontspanningsgebied
Row of Trees	Rye Bome

Geographical names, shown in this type face, have not been officially approved.
 Geografiese name, in hierdie lettertipe, is nie amptelik goedgekeur nie.



3318DB PAARL SIXTH EDITION
 3318DB PAARL SESDE UITGAWE 2000



Gepubliseer deur die Hoofdirektoraat: Opmettings en Grondinligting, Private Bag X10, Mowbray.
 Published by the Chief Directorate: Surveys and Land Information, Private Bag X10, Mowbray.
 Fotografie 498/304
 Photography 498/304
 © Staatsoutersreg 1993 State Copyright

Gauss Konforme Projeksie, Middellmeridian 19° Oos
 Kontourtussenruimte 5 Meters
 Ruittussenruimte 1 000 Meter

1:10 000



Gauss Conform Projection, Central Meridian 19° East
 Contour Interval 5 Metres
 Grid Interval 1 000 Metres

3318 DB 25 DERDE UITGAWE
 THIRD EDITION
 1992

INDEKS VAN VELLE INDEX TO SHEETS

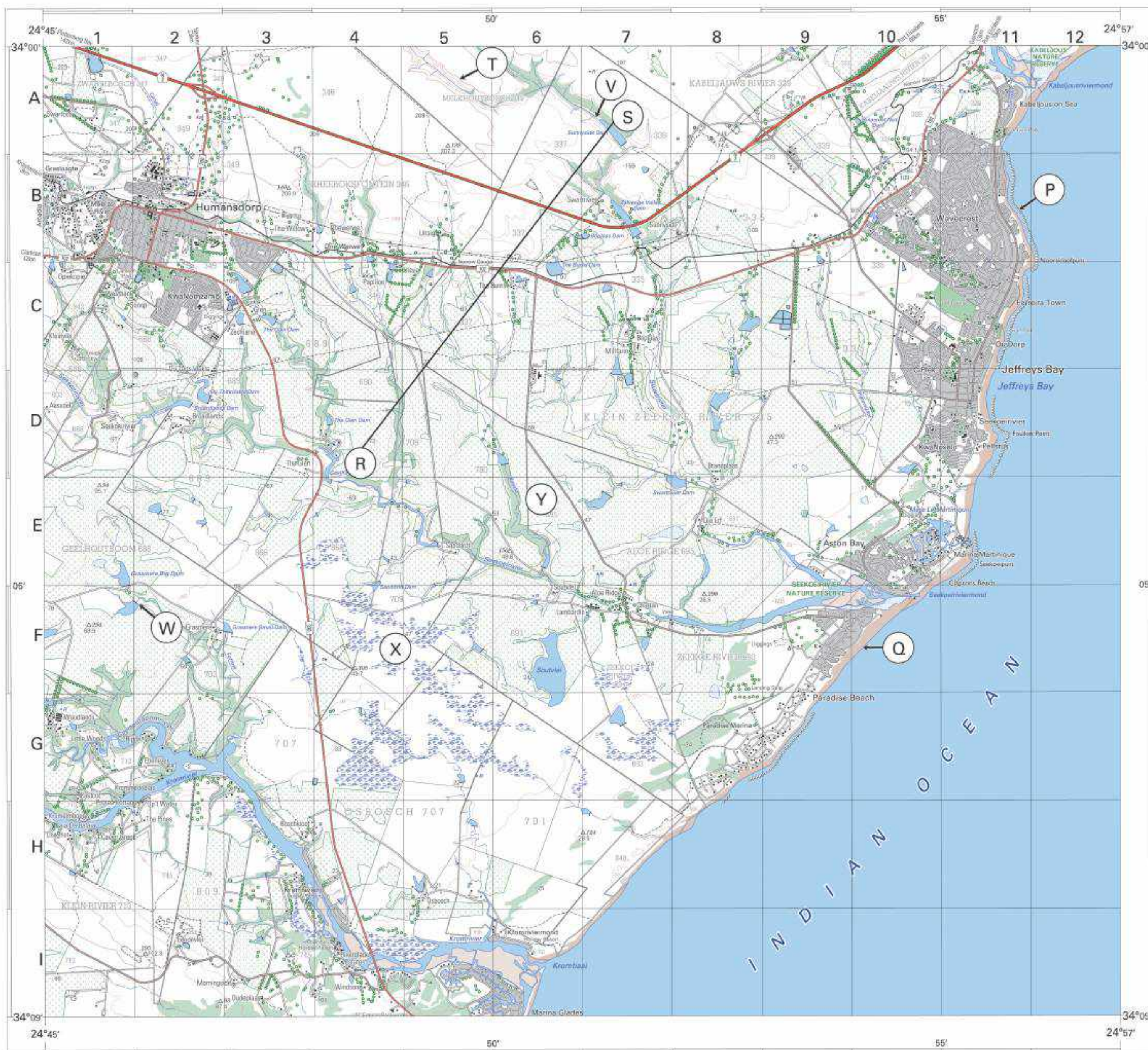
DB18	DB20	CA16
DB24	DB25	CA21
DD4	DD5	CC1

33°46'

19°00'

3424BB HUMANSDORP

1:50 000 SOUTH AFRICA
SUID-AFRIKA



Published by the Chief Directorate Surveys and Mapping, Private Bag X10, Mowbray, Cape Town. Gedrukte deur die Hoofkantoor Opmettings en Kaarte, Private Bag X10, Mowbray. © State Copyright 2002. State of South Africa. Printed by the Chief Directorate Surveys and Mapping, Gedrukt deur die Hoofkantoor Opmettings en Kaarte.

REFERENCE	VERKLARING
National Freeway, National Route	Rasvlei, Dorpspad, Nasionale Route
Arterial Road	Hoofverkeersroete
Main Road	Hoofpad
Secondary Road, Bench Mark	Sekundêre Pad, Hoopmerkie
Other Road, Bridge	Ander Pad, Brug
Track and Riding Trail	Doornes Pad en Voetsienpad
Railway, Station or Stopping	Spoorweg, Stasie of Stop
Other Railway, Tunnel	Ander Spoorweg, Tunnel
Embankment, Cutting	Opvoering, Deurgroening
Power Line	Kraglyn
Sub-station, High, Low Voltage	Bevoelde Gebied (Hoë, Laë Voltasie)
Sub-station, Pole	Geboue, Muraal
Post Office, Police Station, Store	Postkantoor, Polisie-stasie, Winkel
Place of Worship, School, Hotel	Plak van Aankoms, Skool, Hotel
Fence, Wall	Omheining, Muur
Windmill, Monument	Windmolen, Monument
Communication Tower	Kommunikasietoring
Mine Dump, Excavation	Mynafval, Uitgraving
Topographical Station, Marine Beacon	Topografiese Stasie, Seeboei
Lighthouse and Marine Light	Waarborging en Seevaartlig
Genetery, Grave	Bevingsplek, Graf

Heights are in metres above mean sea level
Hoogtes is in meter bo gemiddelde seevlak

Gebruik van die Suid-Afrikaanse Kaartprojeksie (SAC) met 'n Sentraal Meridiaan van 24° Oos.
Gebruik van die Suid-Afrikaanse Kaartprojeksie (SAC) met 'n Sentraal Meridiaan van 24° Oos.

Mean magnetic declination 2025: West of True North, July 2001.
Mean annual change 9' Westward, 1996-2001.
Supplied by Hermanus Magnetic Observatory.

Mean magnetic declination 2025: West of True North, July 2001.
Mean annual change 9' Westward, 1996-2001.
Voorsien deur die Hermanus Magnetiese Observatorium.



REFERENCE	VERKLARING
International Boundary and Box	Internasionale Grens en Boks
Provincial Boundary	Provinsiale Grens
Protected Area	Bewaringsgebied
Perennial River	Stoetvloeiende Rivier
Perennial Water	Stoetvloeiende Water
Non-perennial River	Nie-stoetvloeiende Rivier
Non-perennial Water	Nie-stoetvloeiende Water
Dry Water Course	Droë Waterloop
Dry Pan	Droë Pan
Marsh and Vlei	Moeras en Vlei
Pipeline (above ground)	Pyflyn (bo die grond)
Water Tower, Reservoir, Water Point	Watersoring, Reservoir, Waterpunt
Coastal Rocks	Kustlynroes
Prominent Rock Outcrop	Prominente Rotsop
Embankment	Opvoering
Woodland	Bosgebied
Cultivated Land	Bewerkte Land
Orchard or Vineyard	Bos of Wingerd
Recreation Ground	Ontspanningsplek
Row of Trees	Reë Bome

3424BB HUMANSDORP THIRD EDITION DERDE UITSAWE 1999

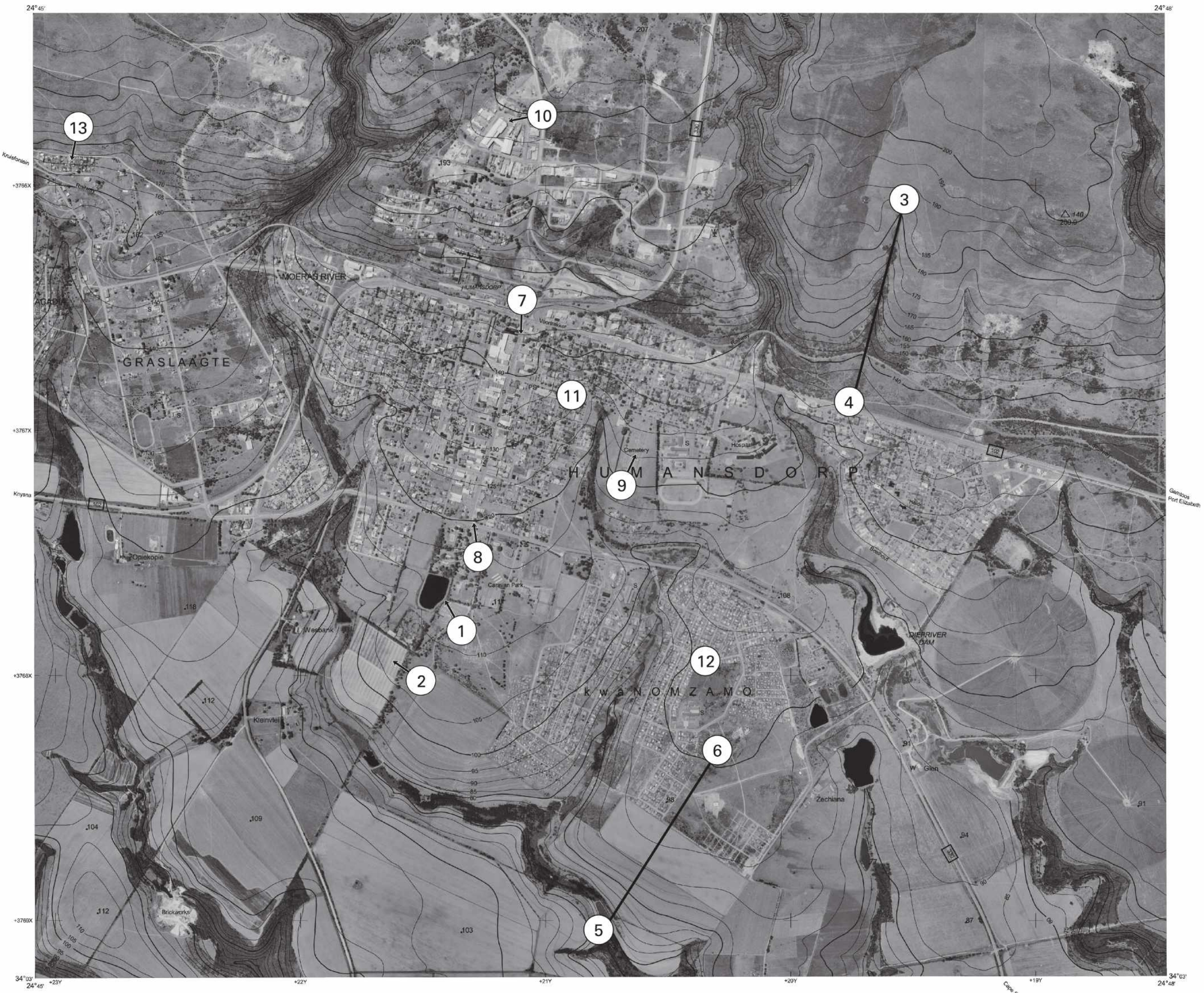
Wielste poging is gemaak om die akkuraasie van hierdie kaart te verseker. Getuens word versoek om die Hoofkantoor Opmettings en Kaarte hiervan in kennis te stel.

All possible measures have been taken to ensure the accuracy of this map. Users are requested to notify the Chief Directorate Surveys and Mapping of any errors or omissions.



3424 BB 1 HUMANSDORP

ORTHOPHOTO MAP SERIES 1 : 10 000 SOUTH AFRICA SUID-AFRIKA



Published by the Chief Directorate: Surveys and Mapping, Private Bag X10, Mowbray
 Gepubliseer deur die Hoof Direkteoraat: Opmetings en Kartering, Privatepak X10, Mowbray
 Photography 499/357
 Fotografie 499/357
 © State Copyright 2001 Staatsoutreuneg

Whilst every effort is made to ensure the accuracy of this map, users noting errors and omissions are requested to notify the Chief Directorate: Surveys and Mapping.
 Alle pogings moontlik word aangewend om die akkuraatheid van hierdie kaart te verseker. Gebruikers word versoek om die Hoofdirekteoraat: Opmetings en Kartering, te verwittig van enige foute of weglatinge.

Gauss Conform Projection, Central Meridian 25° East
 Contour Interval 5 Meters
 Grid Interval 1 000 Meters
 Hartbeesthoek 94 Datum
 WGS84 Ellipsoid

1:10 000

 WGS84

Gauss Konforme Projeksie, Middellandse 25° Oos
 Kontourtussenruimte 5 Meter
 Ruittussenruimte 1 000 Meter
 Hartbeesthoek 94 Datum
 WGS84 Ellipsoid

3424 BB 1 SECOND EDITION TWEDE UITGAWE 1999

INDEX TO SHEETS INDEKS VAN VELLE

3324D025	3324D021	3324D022
3424BA5	3424BB1	3424BB2
3424BA10	3424BB6	3424BB7