

Published by the Chief Directorate: Surveys and Mapping, Private Bag X10, Mowbray
 Gepubliseer deur die Hoofdirektorat: Opmetings en Kartering, Privatebag X10, Mowbray
 © State Copyright 2003 Staatsoutersreg
 This map may not be reproduced by any means, including digital, without prior permission.
 Hierdie kaart mag nie deur enige metode herproduseer word, insluitend digitaal, sonder vooraf verkreepte goedkeuring nie.

Printed by the Chief Directorate: Surveys and Mapping.
 Gedruk deur die Hoofdirektorat: Opmetings en Kartering.

CONTOUR INTERVAL 20 METRES KONTOUTUSSENRIJWIDE 20 METER
 Heights are in metres above mean sea level
 Hoogtes is in meter bo gemiddelde seespieël
 Gauss Conform Projection, Central Meridian 29° East.
 Hartebeesthoek 94 Datum (WGS84 Ellipsoid).
 Mean magnetic declination 12°57' West of True North (July 2002).
 Gemiddelde jaarlikse verandering 7° Westwaarts (2000-2005).
 Supplied by Hermanus Magnetic Observatory.
 Gemiddelde magnetiese deklinasie 12°57' Wes van Ware Noord (Julie 2002).
 Gemiddelde jaarlikse verandering 7° Weswaarts (2000-2005).
 Voorsien deur die Hermanus Magnetiese Observatorium.

REFERENCE	VERKLARING
National Freeway; National Route	Nasionale Deurpad; Nasionale Roete
Arterial Road	Hoofverkeersroete
Main Road	Hoofpad
Secondary Road; Bench Mark	Sekondêre Pad; Hoogtepunt
Other Road; Bridge	Ander Pad; Brug
Track and Hiking Trail	Downwe Pad en Voetslaanpad
Railway; Station or Siding	Spoorweg; Stasie of Sylyn
Other Railway; Tunnel	Ander Spoorweg; Tonnel
Embankment; Cutting	Opvulling; Deurgrawing
Power Line	Kraglyne
Built-up Area (High, Low Density)	Beboude Gebied (Hoë, Laë Digtheid)
Buildings; Ruin	Geboue; Mursie
Post Office; Police Station; Store	Poskantoor; Polisie-stasie; Winkel
Place of Worship; School; Hotel	Plek van Aanbidding; Skool; Hotel
Fence; Wall	Draadheining; Muur
Windpump; Monument	Windpomp; Monument
Communication Tower	Kommunikasietoring
Mine Dump; Excavation	Myinhoop; Uitgraving
Trigonometrical Station; Marine Beacon	Peilbaken; Seevaartbaken
Lighthouse and Marine Light	Vuurtoring en Seevaartlig
Cemetery; Grave	Begraafplaas; Graf

Cadastral information supplied by the Surveyor-General
 Original Farms

REFERENCE	VERKLARING
International Boundary and Beacon	Internasionale Grens en Baken
Provincial Boundary	Provinsiale Grens
Protected Area	Bewarings Gebied
Perennial River	Standhoudende Rivier
Non-perennial River	Nie-standhoudende Rivier
Non-perennial Water	Nie-standhoudende Water
Dry Water Course	Droë Loop
Dry Pan	Droë Pan
Marsh and Vlei	Moeras en Vlei
Pipeline (above ground)	Pyplyn (bo die grond)
Water Tower; Reservoir; Water Point	Wattertoring; Reservoir; Waterpunt
Coastal Rocks	Kuslynroete
Prominent Rock Outcrop	Prominente Klipbank
Erosion; Sand	Erosie; Sand
Woodland	Beboste Gebied
Cultivated Land	Bewerkte Land
Orchard or Vineyard	Boord of Wingerd
Recreation Ground	Ontspanningsterrein
Row of Trees	Rye Bome

Kadastrale inligting verskrek deur die Landmeter-generaal
 Oorspronklike Plaas

The delimitation of international and provincial boundaries on this map should not be considered as authoritative.
 Die afbakening van internasionale en provinsiale grense op hierdie kaart moet nie as gesaghebbend beskou word nie.



2230 AC 11 MUSINA (SOUTH)

ORTHOPHOTO MAP SERIES 1 : 10 000 SOUTH AFRICA
ORTOFOTO KAARTREEKS SUID-AFRIKA

30°03'
22°21'



Gauss Conform Projection. Central Meridian 31° East
Contour Interval 5 Metres
Grid Interval 1 000 Metres
Hartebeesthoek 94 Datum
WGS84 Ellipsoid

1 : 10 000

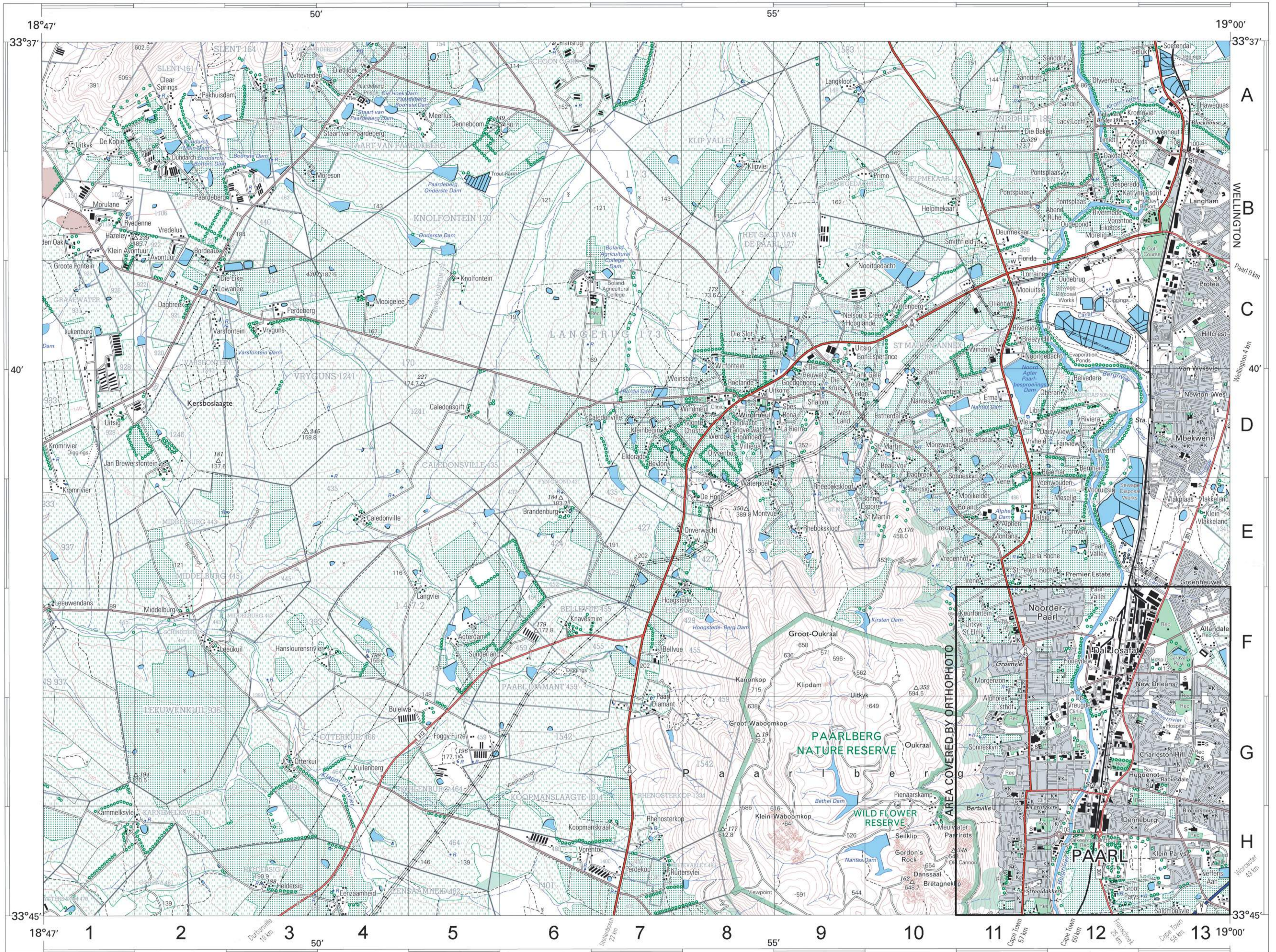
Gauss Konforme Projeksie. Middelmeridiaan 31° Oos
Kontoertussenruimte 5 Meter
Ruittussenruimte 1 000 Meter
Hartebeesthoek 94 Datum
WGS84 Ellipsoid

2230 AC 11 SECOND EDITION
TWEDE UITGAWE
2004

INDEX TO SHEETS INDEX VAN VELLE

2229BD10	2230AC6	2230AC7
2229BD15	2230AC11	2230AC12
2229BD20	2230AC16	2230AC17

30°00'



Published by the Chief Directorate: Surveys and Mapping, Private Bag X10, Mowbray
 Gepubliseer deur die Hoofdirektoraat: Opmetings en Kartering, Privaatsak X10, Mowbray
 © State Copyright 2003 Staatsouteursreg
 This map may not be reproduced by any means, including digital, without prior permission.
 Hierdie kaart mag nie deur enige metode herproduseer word, insluitend digitaal, sonder vooraf verkreeë goedkeuring nie.



Printed by the Government Printer, Private Bag X85, Pretoria
 Gedruk deur die Staatsdrukker, Privaatsak X85, Pretoria

REFERENCE	VERKLARING
National Freeway; National Route	Nasionale Deurpad; Nasionale Rote
Arterial Road	Hoofverkeersroete
Main Road	Hoofpad
Secondary Road; Bench Mark	Sekondêre Pad; Hoogtemerk
Other Road; Bridge	Andr Pad; Brug
Track and Hiking Trail	Dowwe Pad en Voetslaanpad
Railway; Station or Siding	Spoorweg; Stasie of Sylyn
Other Railway; Tunnel	Andr Spoorweg; Tonnell
Embankment; Cutting	Opvulling; Deurgrawing
Power Line	Kraglyn
Built-up Area (High, Low Density)	Beboude Gebied (Hoë, Laë Digtheid)
Buildings; Ruin	Geboue; Murasie
Post Office; Police Station; Store	Poskantoor; Polisieostasie; Winkel
Place of Worship; School; Hotel	Plek van Aanbidding; Skool; Hotel
Fence; Wall	Draadheining; Muur
Windpump; Monument	Windpomp; Monument
Communication Tower	Kommunikasietoring
Mine Dump; Excavation	Mynhoop; Uitgraving
Trigonometrical Station; Marine Beacon	Peilbaken; Seevaartbaken
Lighthouse and Marine Light	Vuurtoring en Seevaartlig
Cemetery; Grave	Begraafplaas; Graf

Mean magnetic declination 23°33' West of True North (July 2002).
 Mean annual change 6' Westwards (2000-2005).
 Supplied by Hermanus Magnetic Observatory.
 Gemiddelde magnetiese deklinasie 23°33' Wes van Ware Noord (Julie 2002).
 Gemiddelde jaarlikse verandering 6' Weswaarts (2000-2005).
 Voorsien deur die Hermanus Magnetiese Observatorium.

Heights are in metres above mean sea level
 Hoogtes is in meter bo gemiddelde seespieël
 CONTOUR INTERVAL 20 METRES KONTTOERTUSSENRUIMTE 20 METER
 Gauss Conform Projection. Central Meridian 19° East.
 Hartebeesthoek 94 Datum (WGS84 Ellipsoid).

The grid lines of the South African Co-ordinate System are indicated in the margin by short black ticks at 10 000 metre intervals, with co-ordinate values in units of 10 000 metres in blue.
 Die ruitlyne van die Suid-Afrikaanse Koördinaatsisteel word in die kantruimte aangetoon deur kort swart strepies 10 000 meter van mekaar, met koördinaatwaardes in eenhede van 10 000 meter in blou.

INDEX TO SHEETS	INDEKS VAN VELLE	
3318BC	3318BD	3318BE
3318DA	3318DB	3318DC
3318DC	3318DD	3318DE

Whilst every effort is made to ensure the accuracy of this map, users noting errors and omissions are requested to notify the Chief Directorate: Surveys and Mapping.

Allé pogings moontlik word aangewend om die akkuraatheid van hierdie kaart te verseker. Gebruikers word versoek om die Hoofdirektoraat: Opmetings en Kartering, te verwittig van enige foute of weglatings.

REFERENCE	VERKLARING
International Boundary and Beacon	Internasionale Grens en Baken
Provincial Boundary	Provinsiale Grens
Protected Area	Bewarings Gebied
Perennial River	Standhoudende Rivier
Perennial Water	Standhoudende Water
Non-perennial River	Nie-standhoudende Rivier
Non-Perennial Water	Nie-standhoudende Water
Dry Water Course	Droë Loop
Dry Pan	Droë Pan
Marsh and Vlei	Moeras en Vlei
Pipeline (above ground)	Pyplyn (bo die grond)
Water Tower; Reservoir; Water Point	Watertoring; Reservoir; Waterpunt
Coastal Rocks	Kuslynrotse
Prominent Rock Outcrop	Prominente Klipbaken
Erosion; Sand	Erosie; Sand
Woodland	Beboste Gebied
Cultivated Land	Bewerkte Land
Orchard or Vineyard	Boord of Wingerd
Recreation Ground	Ontspanningssterrein
Row of Trees	Rye Bome

Cadastral information supplied by the Surveyor-General
 Original Farms

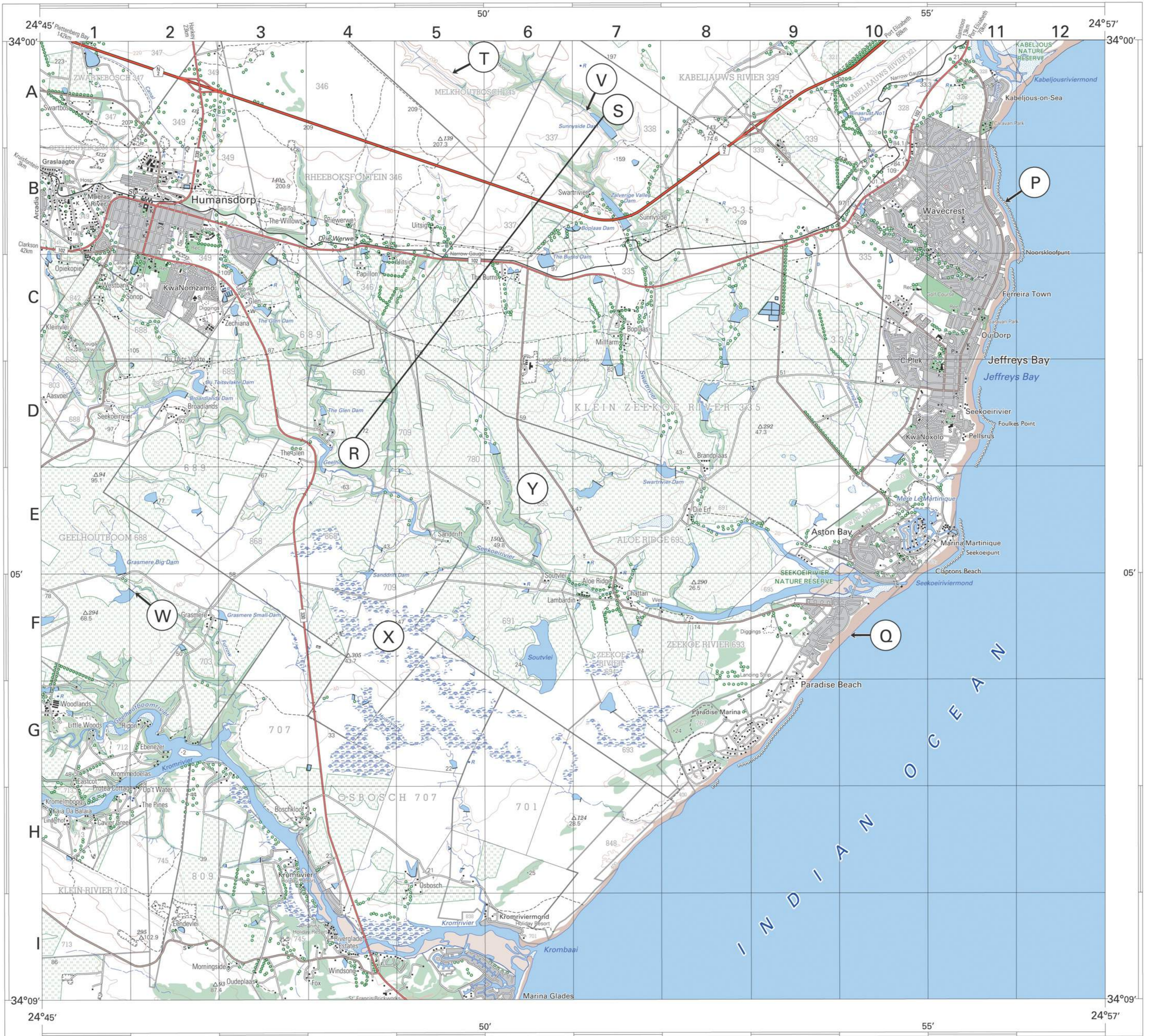
Kadastrale inligting verskrek deur die Landmeter-generaal
 Oorspronklike Plaas

Geographical names, show in this type face, have not been officially approved.
 Geografiese name, in hierdie letterbeeld, is nie offisiel goedgekeur nie.





DB19	DB20	CA16
DB24	DB25	CA21
DD4	DD5	CC1



Published by the Chief Directorate: Surveys and Mapping, Private Bag X10, Mowbray
Gepubliseer deur die Hoofdirektoraat: Opmetings en Kartering, Private Bag X10, Mowbray
© State Copyright 2002 Staatsouteursreg
This map may not be reproduced by any means, including digital, without prior permission.
Hierdie kaart mag nie deur enige metode herproduseer word, insluitend digitaal, sonder vooraf verkreepte goedkeuring nie.



Printed by the Chief Directorate: Surveys and Mapping.
Gedruk deur die Hoofdirektoraat: Opmetings en Kartering.

Heights are in metres above mean sea level
Hoogtes is in meter bo gemiddelde seespieël

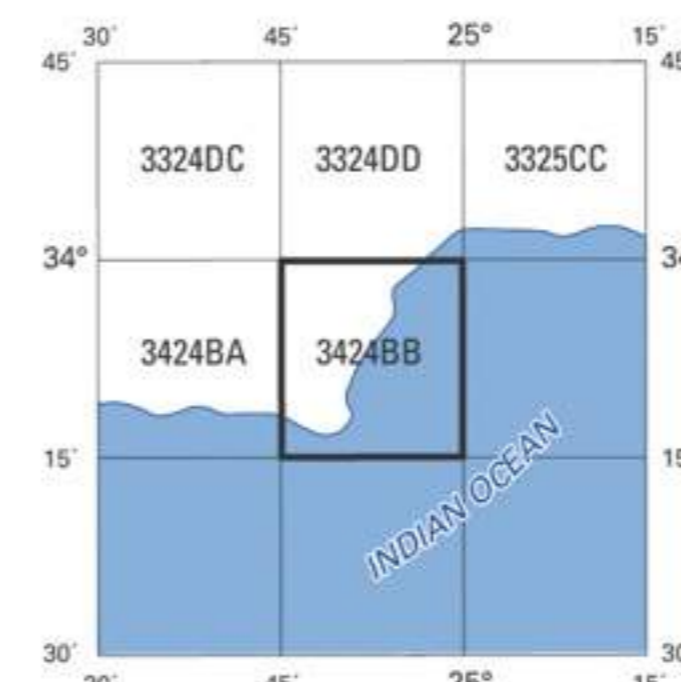
CONTOUR INTERVAL 20 METRES KONTORTUSSENRUIMTE 20 METER

Gauss Conform Projection, Central Meridian 25° East.
Hartebeesthoek 94 Datum (WGS84 Ellipsoid).

Mean magnetic declination 25°29' West of True North (July 2001).
Mean annual change 9' Westwards (1995-2000).
Supplied by Hermanus Magnetic Observatory.

Gemiddelde magnetiese deklinasie 25°29' Wes van Ware Noord (Julie 2001).
Gemiddelde jaarlikse verandering 9' Westwaarts (1995-2000).
Voorsien deur die Hermanus Magnetiese Observatorium.

INDEX TO SHEETS INDEKS VAN VELLE



REFERENCE

VERKLARING

Table with two columns: REFERENCE and VERKLARING. It lists various symbols and their corresponding features such as National Freeway, Arterial Route, Main Road, Secondary Road, etc., in both English and Afrikaans.

REFERENCE

VERKLARING

Table with two columns: REFERENCE and VERKLARING. It lists symbols for geographical features like International Boundary, Provincial Boundary, Protected Area, Perennial River, etc., in both English and Afrikaans.

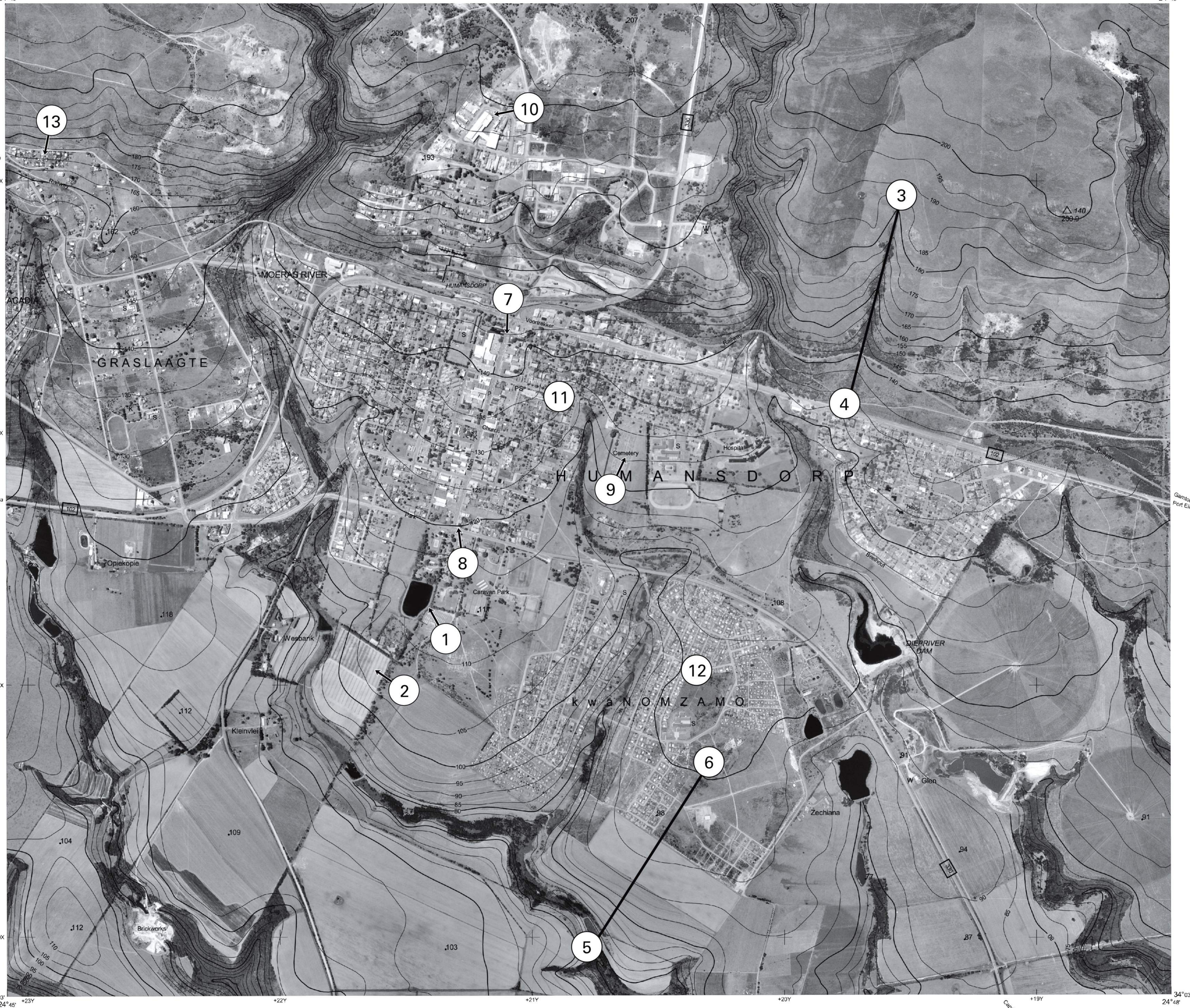
Cadastral information supplied by the Surveyor-General
Oorspronklike Plase

Kadastrale inligting verskrek deur die Landmeter-generaal
Oorspronklike Plase

Whilst every effort is made to ensure the accuracy of this map, users noting errors and omissions are requested to notify the Chief Directorate: Surveys and Mapping.



Alle pogings moontlik word aangewend om die akkuraatheid van hierdie kaart te verseker. Gebruikers word versoek om die Hoofdirektoraat: Opmetings en Kartering, te verwittig van enige foute of weglatings.



Published by the Chief Directorate: Surveys and Mapping, Private Bag X10, Mowbray.
Gepubliseer deur die Hoof Direkoraat: Opmetings en Kartering, Private Sak X10, Mowbray.

Photography 499/357
Fotografie 499/357

© State Copyright 2001 Staatsouteursreg

Whilst every effort is made to ensure the accuracy of this map, users noting errors and omissions are requested to notify the Chief Directorate: Surveys and Mapping.

Alle pogings moontlik word aangewend om die akkuraatheid van hierdie kaart te verseker. Gebruikers word versoek om die Hoofdirekoraat: Opmetings en Kartering, te verwittig van enige foute of weglatings.

Gauss Conform Projection, Central Meridian 25° East

Contour Interval 5 Meters

Grid Interval 1 000 Meters

Hartebeesthoek 94 Datum

WGS84 Ellipsoid

1:10 000



WGS84

Gauss Konforme Projeksie, Middellmeridian 25° Oos

Kontoartussenruimte 5 Meter

Ruittussenruimte 1 000 Meter

Hartebeesthoek 94 Datum

WGS84 Ellipsoid

3424 BB 1

SECOND EDITION
TWEDE UITGAWE
1999

INDEX TO SHEETS INDEKS VAN VELLE

3324CZ25	3324DJ21	3324DD22
3424BA5	3424BB1	3424BB2
3424BA10	3424BB6	3424BB7

34°00' 24°45'