

Published by the Chief Directorate: Surveys and Mapping, Private Bag X10, Mowbray
 Gepubliseer deur die Hoofdireksie: Opmettings en Kartering, Privatebag X10, Mowbray
 © State Copyright 2003 Staatsoutreunereg
 This map may not be reproduced by any means, including digital, without prior permission.
 Hierdie kaart mag nie deur enige metode herproduseer word, insluitend digitaal, sonder vooraf verkryde toestemming nie.

Printed by the Chief Directorate: Surveys and Mapping
 Gedruk deur die Hoofdireksie: Opmettings en Kartering

REFERENCE	VERKLARING
National Freeway/National Route	Nasionale Oewerpad/Nasionale Route
Arterial Road	Hoofverkeersroete
Main Road	Hoofpad
Secondary Road/Bench Mark	Skoolpad/ Hoogtepunt
Other Road/Bridge	Ander Pad/ Brug
Track and Riding Trail	Oewerpad/ Voetspoorpad
Railway/Station or Siding	Spoorweg/ Stasie of Sylyn
Other Railway/Tunnel	Ander Spoorweg/ Tunnel
Embankment/Cutting	Opvoering/ Oergrawing
Power Line	Kraglyn
Bulk-up Area (High, Low Density)	Besette Gebied (Hoek, Lae Digtheid)
Buildings/ Ruin	Geboue/ Ruine
Post Office/Police Station/Stone	Postkantoor/ Polisie-stasie/ Wink
Place of Worship/School/Hotel	Plaas van Aandebidding/ Skool/ Hotel
Fence/Wall	Stoepmuur/ Muur
Windgum/Monument	Windgum/ Monument
Communication Tower	Kommunikasietoring
Mine Dump/Excavation	Mynhoop/ Oewergraaf
Trigonometrical Station/ Marine Beacon	Politeien/ Seewarstasie
Lighthouse and Marine Light	Waaierlig/ Seewarstasie
Cemetery/Grave	Begraafplaas/ Graf

CONTOUR INTERVAL 20 METRES KONTOURTUSSENOMLÊTE 20 METERS

Heights are in metres above mean sea level
 Hoogtes is in meter bo gemiddelde seevlak

Gauss-Cotnam Projection, Central Meridian 30° East.
 Hartmannslobeck 94 Datum (WGS84 Ellipsoid).

Mean magnetic declination: 12°17' West of True North (July 2002).
 Mean annual change 7' Westwards (2002-2005).
 Supplied by Hermanus Magnetic Observatory.

Gemiddelde magnetiese afwysing 12°17' West van Ware Noord (Julie 2002).
 Gemiddelde jaarlike verandering 7' Westwaarts (2002-2005).
 Voorsien deur die Hermanus Magnetiese Observatorium.

INDEX TO SHEETS / INDEKS VAN VELLE

2230BB	2230BA	2230AA
2230BB	2230CA	2230CB

REFERENCE	VERKLARING
International Boundary and Beacon	Internasionale Grens en Baken
Provincial Boundary	Provinsiale Grens
Protected Area	Bewaringsgebied
Perennial River	Staanhouende Water
Intermittent River	Nie-staanhouende Water
Non-perennial River	Nie-staanhouende Water
Dry Water Course	Droë Loop
Dry Pan	Droë Pan
Marsh and Wet	Moeras en Vlei
Pipeline (above ground)	Pyplyn (bo die grond)
Water Tower/Reservoir/Water Point	Waaierfontein/ Reservoir/ Waterpunt
Coastal Rocks	Kusroetes
Prominent Rock Outcrop	Prominente Rookop
Erosion/Sand	Eransie/ Sand
Woodland	Bosveld
Cultivated Land	Bewerkte Land
Orchard or Vineyard	Bosveld of Wingerd
Recreation Ground	Regeringsplein
Row of Trees	Rye Bome

Coloured information supplied by the Surveyor-General
 Originele Figuur

Kolourinformasie verskaf deur die Landmeter-generaal
 Oorspronklike Figuur

The delineation of international and provincial boundaries on this map should not be considered as authoritative.
 Die afbakening van internasionale en provinsiale grense op hierdie kaart moet nie as geregtigheidsbevestiging beskou word nie.

2230AA MUSINA THIRD EDITION
 DENSIE UITGAWE 1999



2230 AC 11 MUSINA (SOUTH)

ORTHOPHOTO MAP SERIES 1 : 10 000 SOUTH AFRICA
 ORTOFOTO KAARTREEKS 1 : 10 000 SUID-AFRIKA



Gauss Conform Projection, Central Meridian 31° East
 Contour Interval 5 Metres
 Grid Interval 1 000 Metres
 Hartebeesthoek 94 Datum
 WGS84 Ellipsoid

1 : 10 000

Gauss Konforme Projeksie, Middellmeridiaan 31° Oos
 Kontourtussenruimte 5 Meter
 Ruittussenruimte 1 000 Meter
 Hartebeesthoek 94 Datum
 WGS84 Ellipsoid

2230 AC 11 SECOND EDITION
 TWEEDE UITGAWE
 2004

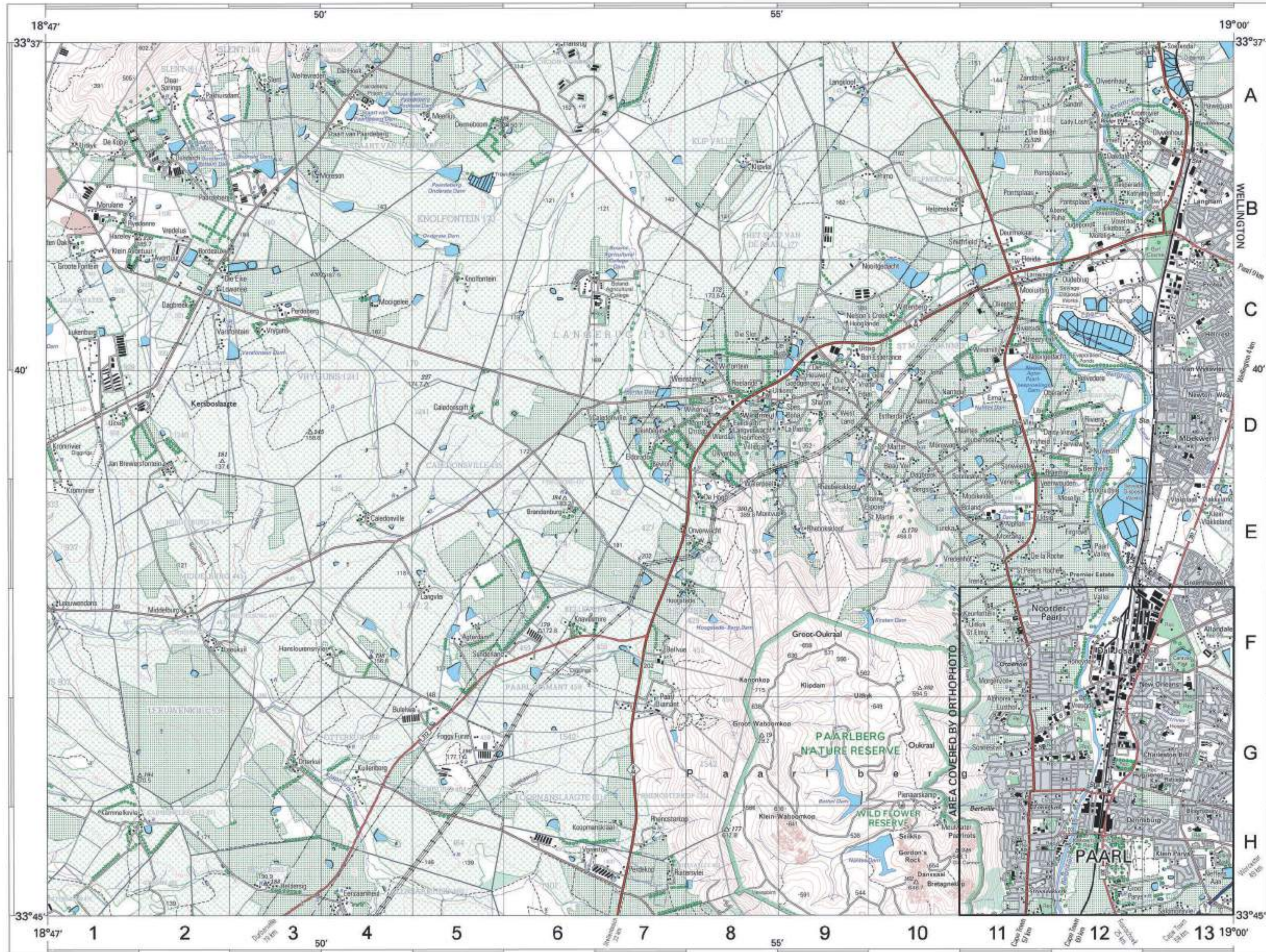
INDEX TO SHEETS INDEX VAN VELLE

2229BD10	2230AC6	2230AC7
2229BD15	2230AC11	2230AC12
2229BD20	2230AC16	2230AC17

30° 00'

3318DB PAARL

1:50 000 SOUTH AFRICA
SUID-AFRIKA



Published by the Chief Directorate: Surveys and Mapping, Private Bag X10, Maseru
 Oopskrywer deur die Hoofkantoor: Opmettings en Kartering, Privatebag X10, Maseru
 © State Copyright 2003 Staatsregering
 This map may not be reproduced by any means, including digital, without prior permission.
 Hierdie kaart mag nie deur enige metode herproduiseer word, insluitend digitaal, sonder vooraf verkryde toestemming nie.

Printed by the Government Printer, Private Bag 285, Pretoria
 Gedruk deur die Staatsdrukker, Privatebag 285, Pretoria

REFERENCE	VERKLARING
National Freeway; National Route	Nasionale Oewerpad; Nasionale Route
Arterial Road	Hoofverkeersroete
Main Road	Hoofpad
Secondary Road; Bench Mark	Sekondêre Pad; Hoogtemerk
Other Road; Bridge	Ander Pad; Brug
Track and Riding Trail	Donoew Pad en Voetslagpad
Railway; Station or Siding	Spoorweg; Stasie of Syden
Other Railway; Tunnel	Ander Spoorweg; Torsel
Embankment; Cutting	Opwilling; Deurgroefing
Power Line	Kraglyn
Build-up Area (High, Low Density)	Beboerde Getind (Hoë, Laë Digtheid)
Buildings; Ruin	Geboue; Mureste
Post Office; Police Station; Store	Postkantoor; Polisestasie; Winkel
Place of Worship; School; Hotel	Plaas van Aandagting; Skool; Hotel
Fence; Wall	Drading; Muur
Windmill; Monument	Windmolen; Monument
Communication Tower	Kommunikasietoring
Mine Dump; Excavation	Mynreus; Uitgraving
Topographical Station; Marine Beacon	Polstasie; Seewaartstake
Lighthouse and Marine Light	Vuurtoerling en Seewaartlig
Cemetery; Grave	Begraafplaas; Graf

Mean magnetic declination 27°32' West of True North (July 2002).
 Mean annual change 6' Westward (2000-2005).
 Supplied by Hermanus Magnetic Observatory.
 Gemiddelde magnetiese deklinasie 27°32' Wes van Ware Noord (Julie 2002).
 Gemiddelde jaarlike verandering 6' Westwaarts (2000-2005).
 Voorsien deur die Hermanus Magnetiese Observatorium.

Heights are in metres above mean sea level
 Hoogtes is in meter to gemiddelde seevlak
 Contour Interval: 5 METRES / Kontourtjusstap: 5 METERS
 Gausse Conform Projection, Central Meridian 19° East.
 Hartwegteek 56 Datum (WGS84 Etjepad).

The grid lines of the South African Co-ordinate System are indicated in the margin by short black ticks at 10 000 metre intervals, with co-ordinate values in units of 10 000 metres in blue.
 Die rolyne van die Suid-Afrikaanse Koördinaatsisteem word in die kantvrees aangedui deur kort swart strepe 10 000 meter van mekaar, met koördinaatswaardes in eenhede van 10 000 meter in blou.

INDEX TO SHEETS	INDEKS VAN VELLE	
3318DC	3318DB	3318AC
WESTERN CAPES		
3318DA	3318DB	3318CA
3318DC	3318DD	3318CC

While every effort is made to ensure the accuracy of this map, users noting errors and omissions are requested to notify the Chief Directorate, Surveys and Mapping.

Alse pogings is aangewend om die akkuraatheid van hierdie kaart te verseker, Gebruikers word versoek om die Hoofkantoor, Opmettings en Kartering, te verwysing van enige foute of weglatings.

REFERENCE	VERKLARING
International Boundary and Baseline	Internasionale Grens en Baseline
Provincial Boundary	Provinsiale Grens
Proposed Area	Bevoegde Getind
Perennial River	Standhoudende Water
Perennial Water	Standhoudende Water
Non-perennial River	Nie-standhoudende Water
Non-Perennial Water	Nie-standhoudende Water
Dry Water Course	Droë Loop
Dry Pan	Droë Pan
Marsh and Vlei	Moeras en Vlei
Playa (saline ground)	Playa (soutgrond)
Water Tower; Reservoir; Water Point	Wateroring; Reservoir; Waterpunt
Coastal Rocks	Kustmure
Prominent Rock Outcrop	Prominentse klippen
Erosion Gully	Erosie Goot
Woodland	Beboete Gebied
Cultivated Land	Bewerkte Land
Orchard or Vineyard	Bos of Wingerd
Recreation Ground	Ontspanningsgebied
Row of Trees	Ry Bome

Geographical names, shown in this typeface, have not been officially approved.
 Geografiese name, in hierdie lettertipe, is nie amptelik goedgekeur nie.



3318DB PAARL SIXTH EDITION DEUR LITSAME 2000



Gepubliseer deur die Hoofdirektorat: Opmetings en Grondinligting, Privaatsak X10, Mowbray.
 Published by the Chief Directorate: Surveys and Land Information, Private Bag X10, Mowbray.
 Fotografie 498/304
 Photography 498/304
 © Staatsoutersreg 1993 State Copyright

Gauss Konforme Projeksie, Middeleridian 19° Oos
 Kontourtussenruimte 5 Meter
 Ruittussenruimte 1 000 Meter

1:10 000



Gauss Conform Projection, Central Meridian 19° East
 Contour Interval 5 Metres
 Grid Interval 1 000 Metres

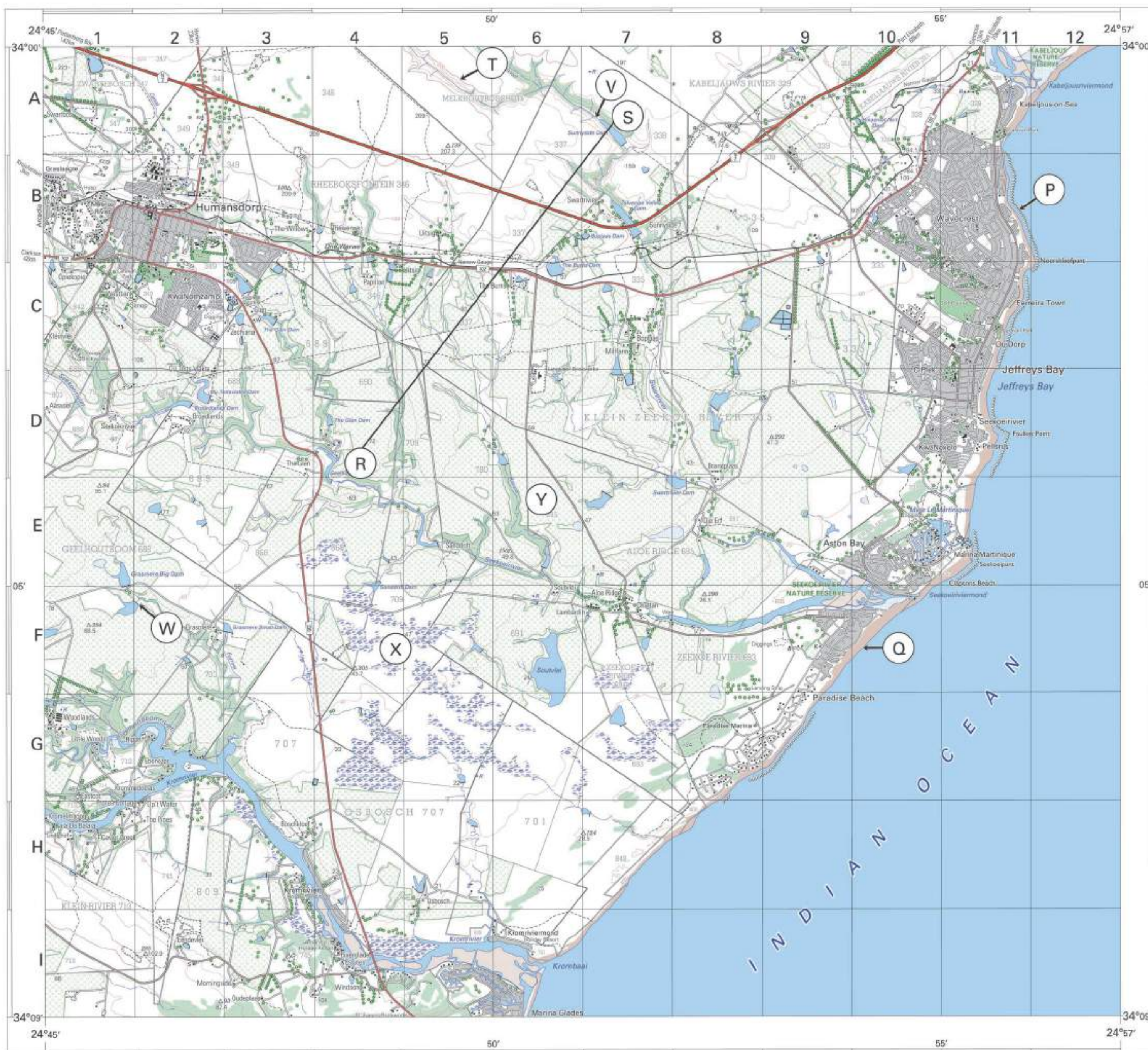
3318 DB 25 DERDE UITGAWE
 THIRD EDITION
 1992

INDEKS VAN VELLE INDEX TO SHEETS

DB19	DB20	CA16
DB24	DB25	CA21
DD4	DD5	CC1

3424BB HUMANSDORP

1:50 000 SOUTH AFRICA
SUID-AFRIKA



Published by the Chief Directorate: Surveys and Mapping, Private Bag X10, Mowbray
Gepubliseer deur die Hoofdirektorat: Opmetting en Kaarteleg, Private Bag X10, Mowbray
© State Copyright 2002. State/Republiek
This map may not be reproduced by any means, including digital, without prior permission.
Hierdie kaart mag nie deur enige metode herproduseer word, insluitend digitaal, sonder vooraf verkryde goedkeuring nie.

Printed by the Chief Directorate: Surveys and Mapping
Gedruk deur die Hoofdirektorat: Opmetting en Kaarteleg

<p>REFERENCE</p> <p>National Freeway: National Route Arterial Route Main Road Secondary Road: Bench Mark Other Road: Bridge Track and Mining Trail Railway: Station or siding Other Railway: Tunnel Embankment: Cutting Power Line Ball-and-socket Joint (High, Low Density) Bulldozer: Full Post Office: Police Station, Store Place of Worship: School, Hotel Fence: Wall Windmill: Monument Communication Tower Mine Dump: Excavation Topographical Station: Marine Beacon Lighthouse and Marine Light Cemetery: Grave</p>	<p>VERKLARING</p> <p>Nasionale Droepiel: Nasionale Rote Hoofweg Sekondêre Pad: Hoofpunt Ander Pad: Brug Dorweg Pad of Voetspoorpad Spoorweg: Stasie of Sylyn Ander Spoorweg: Tunnel Opvoering: Oewergraving Kraglyn Bulboord: Gelyk (Hoë, Laë Digtheid) Gedoude: Mureuse Postkantoor: Politiekantoor, Winkel Plek van Aanbedding: Skool, Hotel Draaifloring: Muur Windmolen: Monument Kommunikasietoring Mynafval: Oewergraving Topografiese Stasie: Marine Baken Ligting: Ligting Gravestein: Graf</p>	<p>HEIGHTS ARE IN METRES ABOVE MEAN SEA LEVEL Hoogtes is in metre bo gemiddelde seevlak</p> <p>CONTOUR INTERVAL 20 METRES / KONTOURTOEWENLIGHEID 20 METER</p> <p>Gauss Conform. Projection, Central Meridian 25° East Hertswogebroek 94 Datum (WGS84 Epoch)</p> <p>Mean magnetic declination 25°29' West of True North (July 2001). Mean annual change 5' Westward (1985-2000). Supplied by Heerlemans Magnetic Observatory.</p> <p>Gemiddelde magnetiese deklinasie 25°29' Wes van Ware Noord (Julie 2001). Gemiddelde jaarlikse verandering 5' Westwaarts (1985-2000). Voorsien deur die Heerlemans Magnetiese Observatorium.</p>	<p>REFERENCE</p> <p>International Boundary and Beacon Provincial Boundary Protected Area Parental River Perennial Water Non-perennial River Non-perennial Water Dry Water Course Dry Pan Marsh and Veld Pond (above ground) Water Tower: Reservoir: Water Point Cultural Rocks Prominent Rock Outcrop Embankment Woodland Cultivated Land Orchard or Vineyard Recreation Ground Row of Trees</p>	<p>VERKLARING</p> <p>Internasionale Grens en Baken Provinsiale Grens Beskermde Gebied Standhoudende Rivier Standhoudende Water Nie-standhoudende Rivier Nie-standhoudende Water Droë Loop Droë Pan Moeras en Veld Pyplyn (bo die grond) Watersoring: Reservoir: Waterpunt Kultuurland Prominentes Klipstuk Oewergraving Bosgebied Bewerkte Land Bos van Wingerd Ontspanningsgebied Ry van Bome</p>
--	--	---	---	---

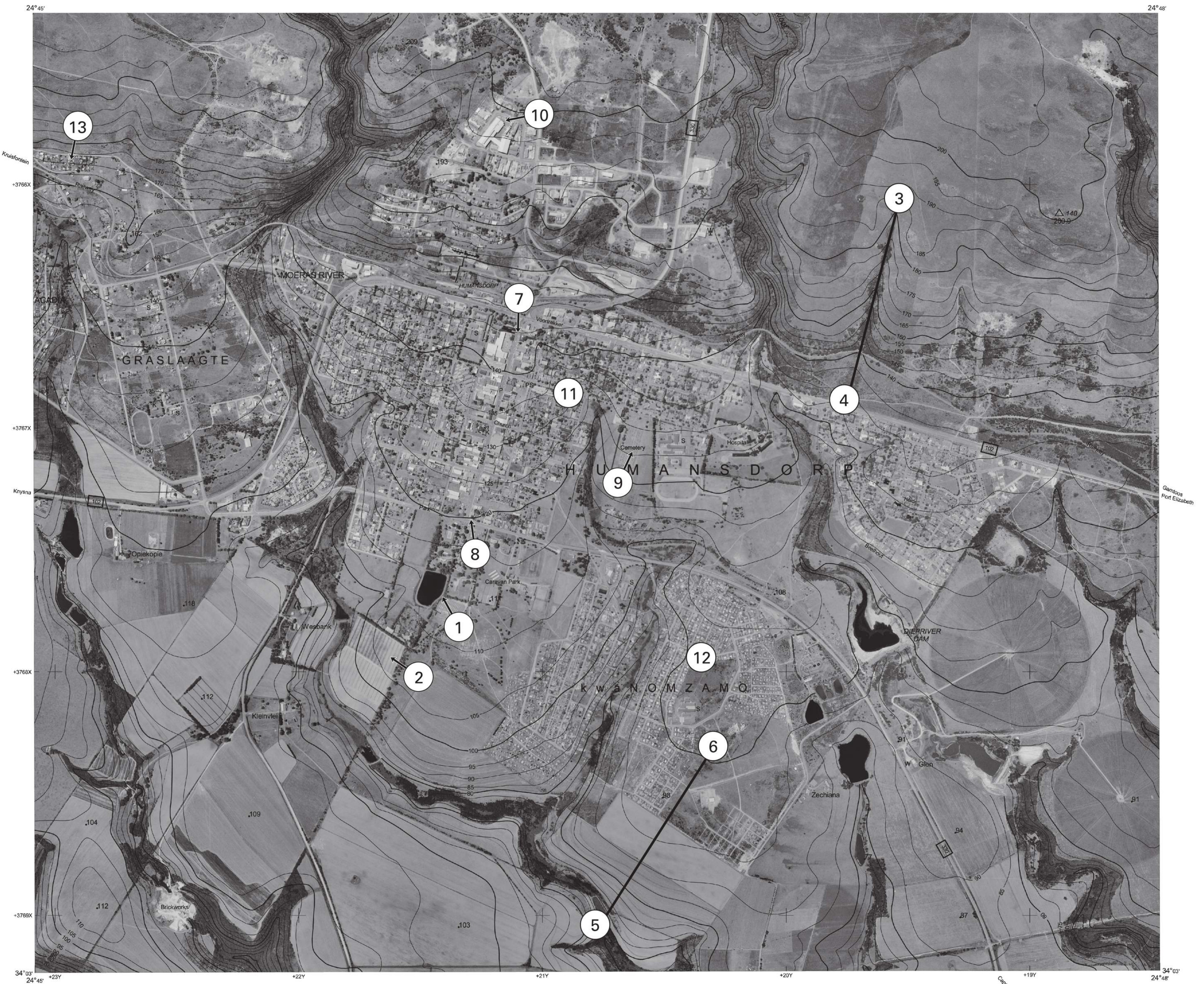
3424BB HUMANSDORP THIRD EDITION DERDE UITSAWE 1999

While every effort is made to ensure the accuracy of this map, users noting errors and omissions are requested to notify the Chief Directorate: Surveys and Mapping.
WGS84

Alle pogings moontlik word aangewend om die akkuraatheid van hierdie kaart te verseker. Betrekkers word versoek om die Hoofdirektorat: Opmetting en Kaarteleg, te verwittig van enige fout of weglatinge.

3424 BB 1 HUMANSDORP

ORTHOPHO PHOTO MAP SERIES 1 : 10 000 SOUTH AFRICA SUID-AFRIKA



Published by the Chief Directorate: Surveys and Mapping, Private Bag X10, Mowbray
 Gepubliseer deur die Hoof Direkteoraat: Opmetings en Kartering, Private Bag X10, Mowbray
 Photography 499/357
 Fotografie 499/357
 © State Copyright 2001 Staatskoteersreg

Whilst every effort is made to ensure the accuracy of this map, users noting errors and omissions are requested to notify the Chief Directorate: Surveys and Mapping.
 Alle pogings moontlik word aangewend om die akkuraasheid van hierdie kaart te verseker. Gebruikers word versoek om die Hoofdirekteoraat: Opmetings en Kartering, te verwittig van enige foute of weglatings.

Gauss Conform Projection, Central Meridian 25° East
 Contour Interval 5 Meters
 Grid Interval 1 000 Meters
 Hartbeesthoek 94 Datum
 WGS84 Ellipsoid

1:10 000



Gauss Konforme Projeksie, Middelmeridiaan 25° Oos
 Kontourtussenruimte 5 Meter
 Ruittussenruimte 1 000 Meter
 Hartbeesthoek 94 Datum
 WGS84 Ellipsoid

3424 BB 1 SECOND EDITION TWEDE UITGAWE 1999

INDEX TO SHEETS		INDEXS VAN VELLE	
3324D025	3324D021	3324D022	
3424BA5	3424BB1	3424BB2	
3424BA10	3424BB6	3424BB7	